



# **Tawich (Marine) Protected Area Initiative**

**Ecology, culture and community in protected  
area creation**

**Colin Scott (McGill University)**

**Monica Mulrennan (Concordia University)**

**Eeyou Marine Region Symposium**

**March 25-27, 2014**

*miyuupimaatisiuun*, living well and being healthy as part of a thriving community of life (*pimaatisiuun*) in the marine (*taawich*) and coastal (*wiinipaakw*) environment



# Spring Goose Hunting











# Summer fishing – Goose Island







# Winter Hunting-Trapping





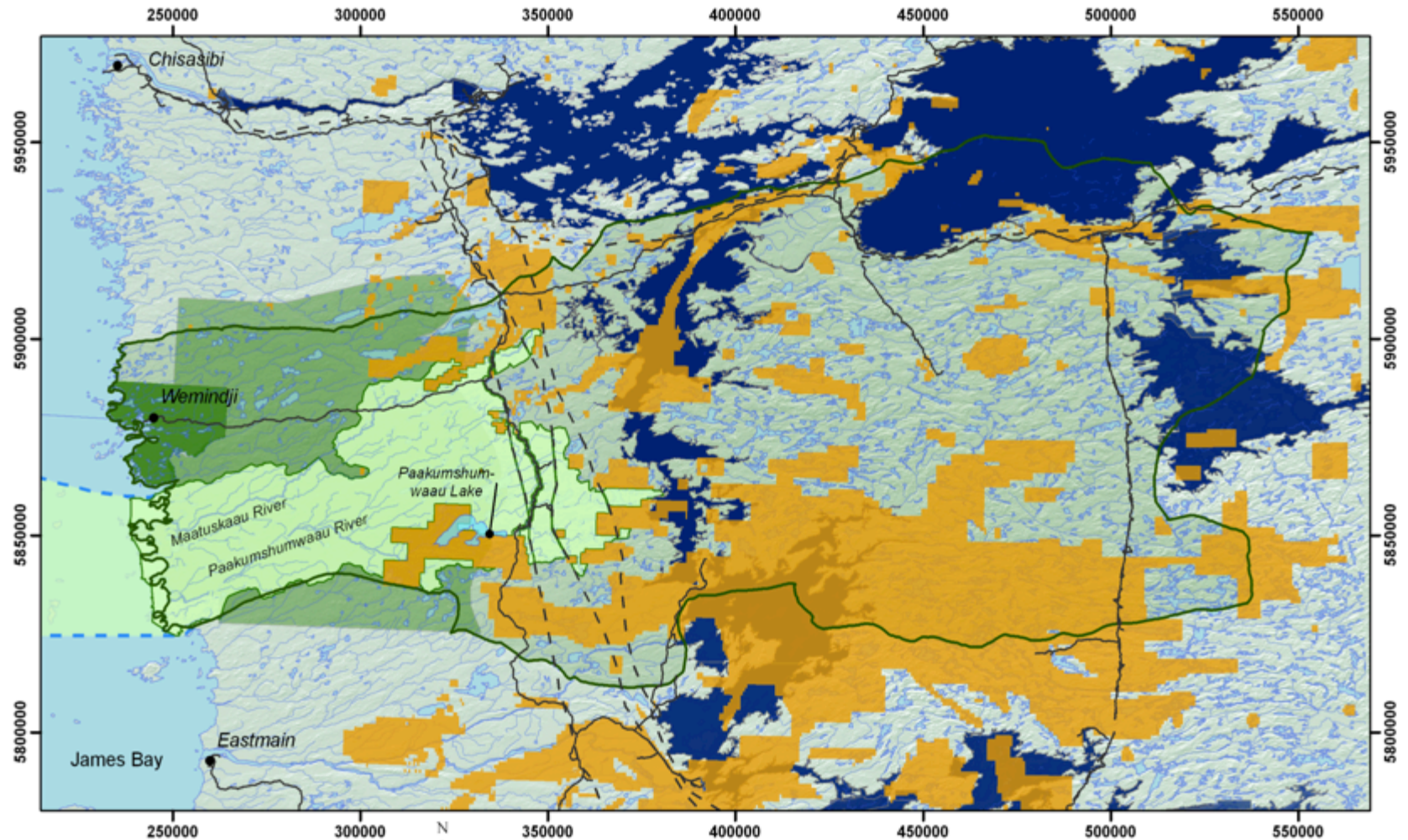
## Partnered Research (2005-10)\*



\*Main funding: Social Sciences and Humanities Research Council (Canada), Community-University Research Alliances (CURA) and Aboriginal Research programs

- The partnership (co-directed by Rodney Mark, then Chief of Wemindji and Colin Scott, McGill University):
  - Family Hunting Territory Stewards (*nituuuu uuchimaauch*)
  - Cree Nation of Wemindji
  - Grand Council of the Crees (Eeyou Istchee)
  - Cree Trappers Association (with resolutions of support)
  - Ministère du Développement durable de l'Environnement et des Parcs [MDDEP]
  - Parks Canada and Department of Fisheries and Oceans
  - Canadian Parks and Wilderness Society (CPAWS/SNAP)
- Researchers from McGill, Concordia, U. of Manitoba and UBC in:
  - Anthropology
  - Archaeology
  - Biology
  - Geography
  - Marine Sciences
  - Natural Resource Sciences
  - Environmental Philosophy

# Paakumshumwaau Biodiversity Reserve Proposal and Development Pressures



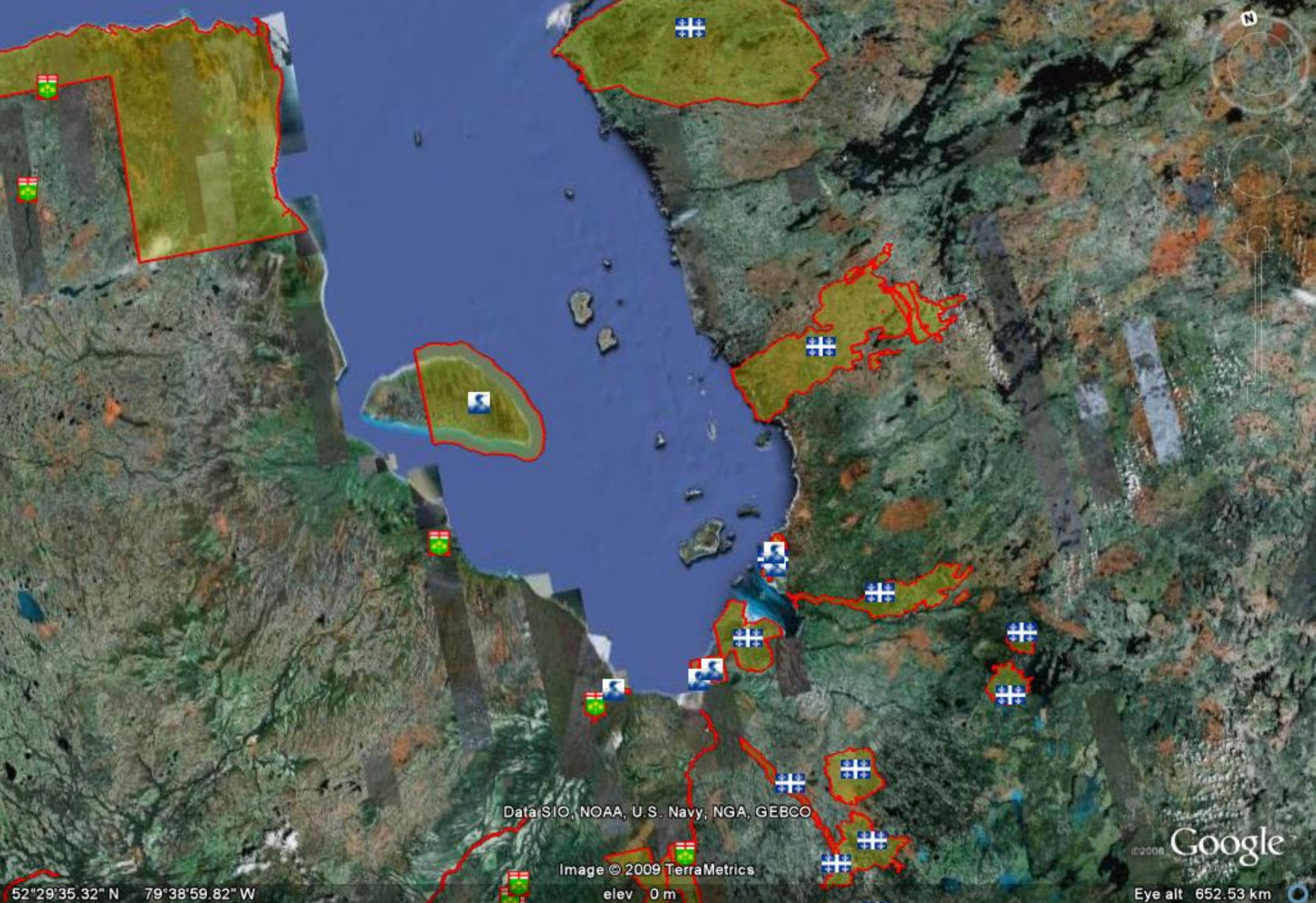
## Legend

- Villages
- Roads
- Transmission Lines
- ▭ Wemindji Territory
- ▭ Mining Titles (Feb. 2008)
- ▭ Planned and present hydroelectric developments
- ▭ Proposed biodiversity reserve (April 2006)
- ▭ marine portion of proposed biodiversity reserve
- ▭ Lac
- ▭ Category I Land
- ▭ Category II Land
- ▭ Category II Land

This map shows the proposed Paakumshumwaau-Maatuskaau Biodiversity Reserve (light green) with its marine extension (blue dashed lines). Dark blue water bodies are planned or already existing hydroelectric reservoirs and related floodings. The orange areas represent active mining titles. The biodiversity reserve boundaries shown follow the watersheds of the two largest rivers on Wemindji community territory that has not already been modified by hydroelectric development. These two watershed areas and adjacent coastal zones are called Paakumshumwaau and Maatuskaau in Cree. The total land area, characterized as open crown lichen woodland, is 4,755 square kilometers.

Map Created by Christopher Wellen, Katherlyne Budd, Ugo Lapointe and Colin Scott on April, 2008.





## Developing Network of Protected Areas

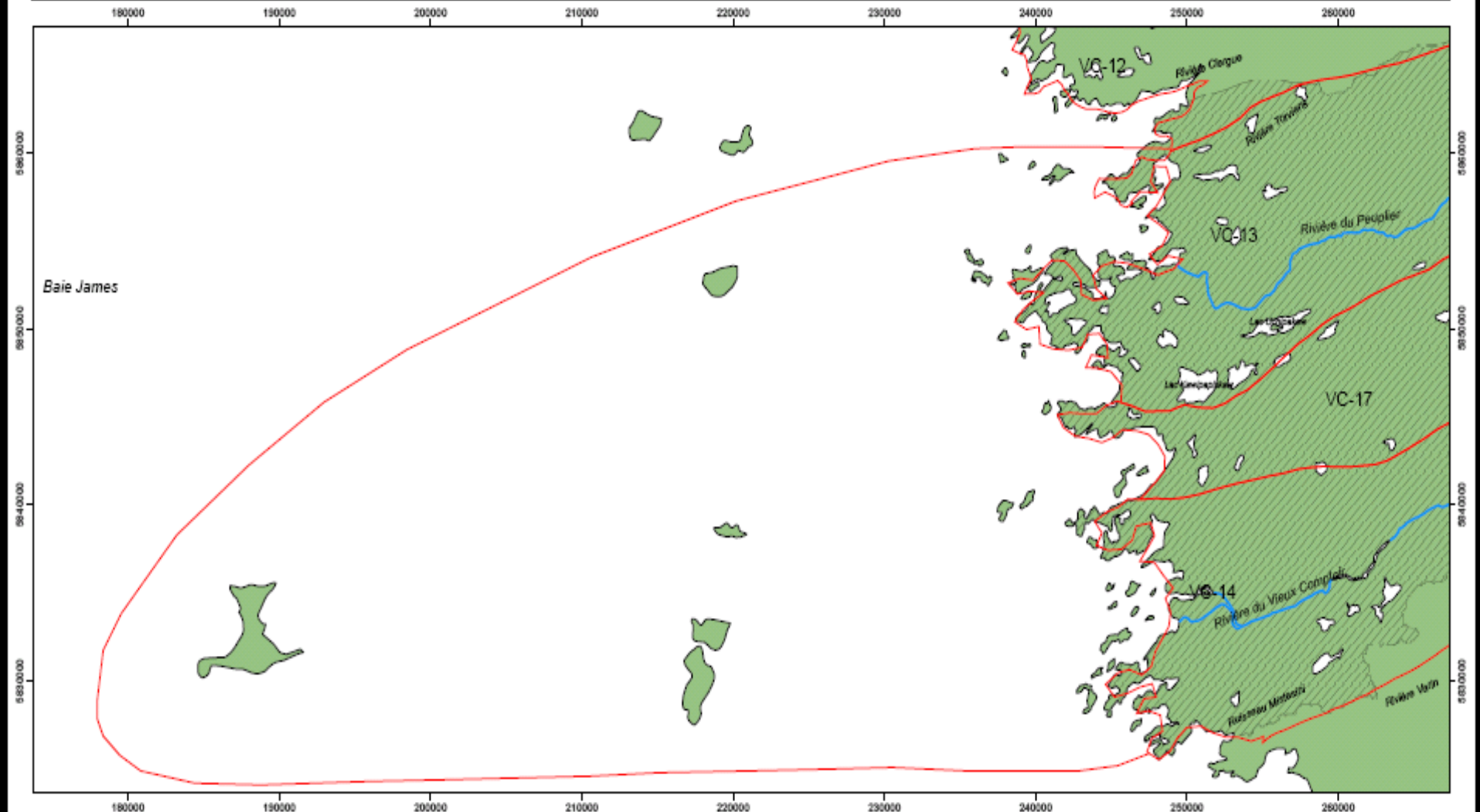
# Goals of the Tawich PA

- To protect the ecological and cultural integrity and diversity of the offshore islands, waters and estuaries of eastern James Bay
- To do so in a manner that is consistent with and builds upon Cree knowledge, values, livelihoods and institutions
- No high-impact industrial activities
- Opportunities for Cree-operated low-impact development (e.g. eco-tourism, cultural tourism)
- Indigenous/scientific knowledge partnerships for protection and restoration of habitats and ecosystems





# Proposed Paakumshumwaau - Maatuskaau Marine Protected Area



● Village  
  Wemindji Family Hunting Territories  
 James Bay Highway  
  Terrestrial Protected Area  
~ Rivière du Peuplier  
~ Rivière du Vieux Comptoir  
 Water Body

Datum: North American Datum 1983  
 Projection: UTM Zone 18 North

Kilometers  
 0 10 20 30 40

**Data sources:**  
 Hunting Territories - Cree Regional Authority, 2002  
 Hydrography: NTDS 1:250,000 digital data  
 Roads: NTDS 1:250,000 digital data  
 Hillsshade: Shuttle Radar Topography Mission (SRTM)  
 Wemindji: NTDS 1:250,000 digital data  
 Watershed delineation: SRTM and AVSWAT2000  
 Inset: ESRI World Basemap. Data may contain some nonconformities, defects, or errors.

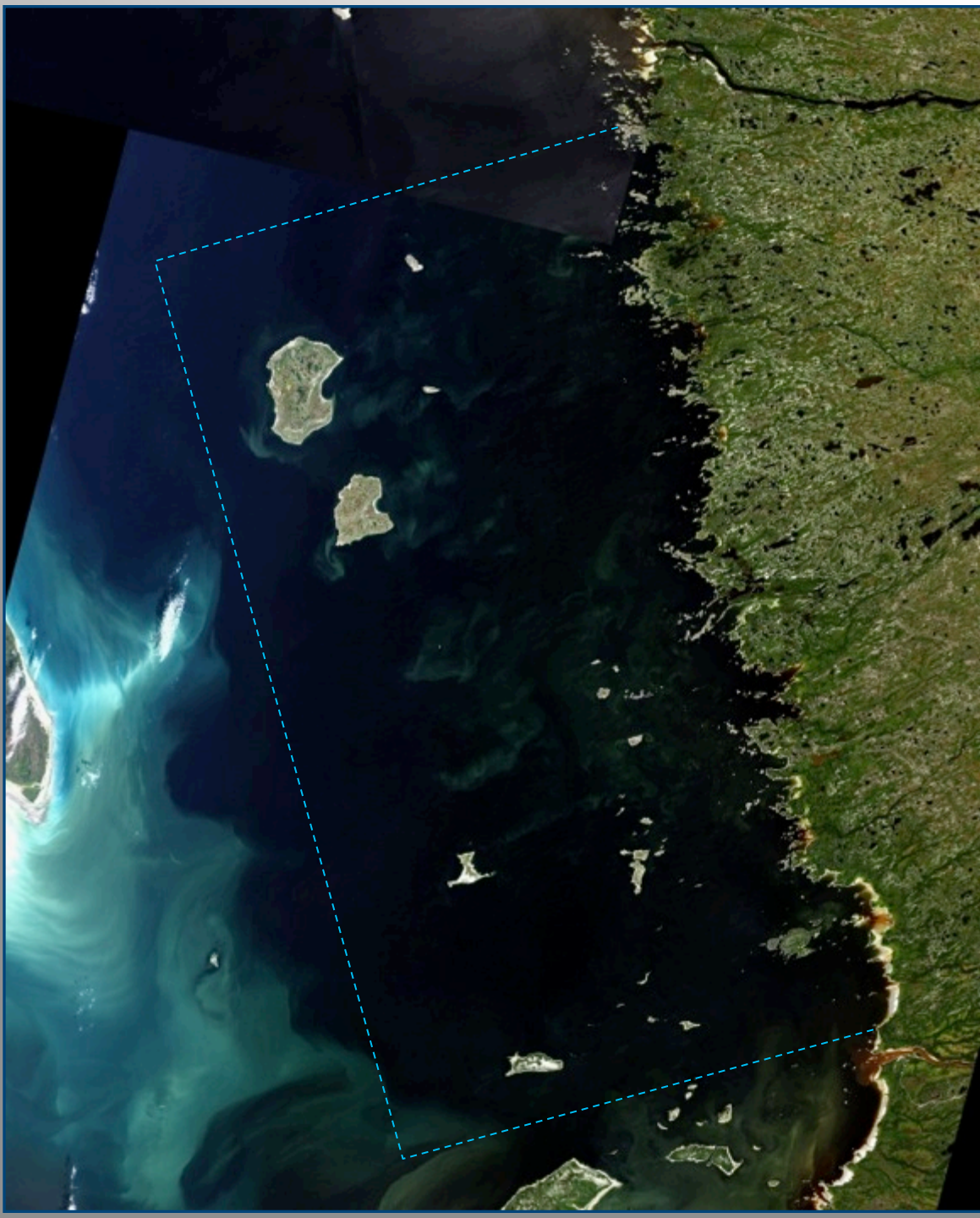
0 100  
 Inset Kilometers

This map shows the proposed Paakumshumwaau-Maatuskaau marine protected area. The Cree names designate the watersheds of two larger rivers, the Old Factory River (Rivière du Vieux Comptoir) and the Poplar River (Rivière du Peuplier) as well as some smaller rivers along the James Bay coastline.

Map Created by Christopher Wellen and Colin Scott on February 12th, 2007







# High intrinsic natural and cultural value

- Marine mammals
  - polar bears
  - beluga whales
  - seals
- International waterfowl
  - migratory and nesting geese, eiders, loons, terns and shorebirds
- Fish
  - sea-run whitefish, cisco, brook trout
- Designations and recognitions
  - Twin Islands Wildlife sanctuary
  - IBP (International Biosphere Project) and IBA (Important Bird Area) sites
- A meeting place of Cree and Inuit lifeways and environmental knowledge



# Marine and Island Surveys



# Cape Hope Islands











# South Twin Island

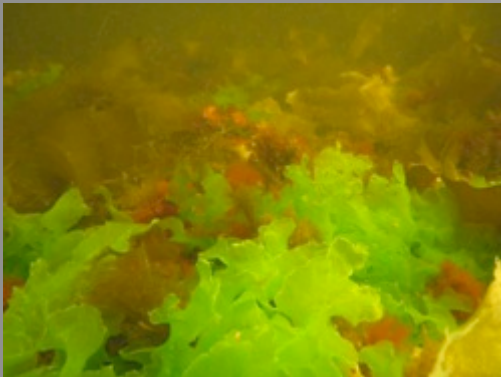












## Marine Surveys 2007/2008

# Beach Seine Sampling





# Helicopter Survey 2009



# Possible Marine Protected Area (MPA) designations

Dept of Fisheries and Oceans  
Oceans Act MPAs: narrowly defined biological protection

Environment Canada  
National Wildlife Areas (NWAs) and Marine Wildlife Areas (MWAs): less narrowly defined but focused on biological/ ecological protection

Parks Canada  
National Marine Conservation Areas (NMCAs): broadly defined including sustainable uses and ecological as well as cultural protection

## *Tawich (Marine) Conservation Area Eastern James Bay*



*Monica Mulrennan (Associate Professor, Dept. of Geography, Planning and Environment, Concordia University)*

*Véronique Bussièrès (Ph.D. candidate, Dept. of Geography, Planning and Environment, Concordia University)*

*Colin Scott (Associate Professor, Dept. of Anthropology, McGill University)*

*The Wemindji-McGill Protected Area Project*

*January 20, 2009*

# Trans-jurisdictional Coordination

- Enhanced terrestrial-marine connectivity through strategic networking with Quebec Ministère du Développement durable, de l'Environnement, de la Faune et des Parcs (MDDEFP) biodiversity reserves and aquatic reserves, both existing and to be created – especially in the coastal zone.

# ICCAs

Indigenous Peoples' and Community Conserved Areas and Territories (ICCAs) [recognized by the International Union for the Conservation of Nature (IUCN) at World Parks Congress 2004]:

*“ICCAs are natural and/or modified ecosystems containing significant biodiversity values, ecological services and cultural values, voluntarily conserved by Indigenous peoples and local communities, both sedentary and mobile, through customary laws or other effective means”* (ICCA Consortium)

# Our research partnership and collaboration since 2010:

- INSTEAD (Indigenous Stewardship of Environment and Alternative Development) – funding from the Fonds Québécois de la Recherche sur la Société et la Culture (FRQSC), 2011-2017, with partners throughout Canada and Latin America, including the GCC-EI and among many others, Mapuche of Argentina, represented by Jorge Nahuel, co-founder of the ICCA Consortium
- Quebec Centre for Biodiversity Sciences, Working Group and Pilot Initiatives
- Migratory Birds Habitat Task Force project on the now 30-year crisis in eelgrass and waterfowl decline (Rod Pachano and George Lameboy)
- Funding application toward a global Centre for Indigenous Conservation and Development Alternatives (CICADA) – extend research alliances from the Americas to indigenous Australia, East Africa, Fenno-Scandia, Siberia and Southeast Asia

# International networking

- Grand Council of the Crees of Eeyou Istchee (GCC-EI) delegation to the World Indigenous Network Conference, Darwin, Northern Territory, Australia, May 2013. The focus of the conference was *to develop a sustained network of First Peoples devoted to indigenous approaches to land and sea management*
- INSTEAD team representation at the Convention on Biodiversity (CBD) Conference of the Parties, Montreal, November 2013 – a vehicle for the achievement of the 'Aichi targets': *17% of terrestrial and inland water, 10% of coastal and marine space in protected areas **by 2020**; with full and effective participation of indigenous and local communities, traditional knowledge, innovations, practices and customary uses*
- Planned GCC-EI delegation to the World Parks Congress, Sydney, Australia, November, 2014

# Next steps back at home...

- Proposed coastal community consultation to discuss EMR research needs and options for a marine protected area or areas, June 2014
- If a National Marine Conservation Area (NMCA) approach is endorsed as an option to be pursued, re-energize GCC-EI/ federal discussions toward that goal
- Orchestrate all tools, options and relationships for EMR protection in the context of Eeyou Istchee-wide land and sea use planning, monitoring, management and rehabilitation

A wide expanse of blue water with a horizon line and a sky filled with white clouds. The water is calm, reflecting the sky. In the distance, there are low, dark landmasses or islands. The sky is a deep blue with scattered white clouds.

***Chiniskuumitinaawaau***