

# Would you like to participate?

Participate at the forum for the exchange and co-generation of knowledge and insights fisheries development and co-management

Inform local project representatives or CTA officers about the whitefish, cisco or brook trout spawning areas

Collect tissues samples that will be used for DNA analyses

*MeegWetch!  
Looking forward collaborating  
with everyone!*

## Research leaders



**Louis Bernatchez**  
Laval University  
[louis.bernatchez@bio.ulaval.ca](mailto:louis.bernatchez@bio.ulaval.ca)  
Tel.: 418-656-3402



**Dylan Fraser**  
Concordia University  
[dylan.fraser@concordia.ca](mailto:dylan.fraser@concordia.ca)  
Tel.: 514-848-2424 #8729



**Monica Mulrennan**  
Concordia University  
[monica.mulrennan@concordia.ca](mailto:monica.mulrennan@concordia.ca)  
Tel.: (514) 848-2424 #4467

## CTA-EMR Local Officers

**Waskaganish : 819-895-2030**  
**Sanford ([sdiamond@ctaoffice.ca](mailto:sdiamond@ctaoffice.ca))**  
**Eastmain : 819-977-2165**  
**Derek ([dokimaw@ctaoffice.ca](mailto:dokimaw@ctaoffice.ca))**  
**Wemindji : 819-978-3005**  
**George ([gnatawapineskum@ctaoffice.ca](mailto:gnatawapineskum@ctaoffice.ca))**  
**Chisasibi : 819-855-2202**  
**John ([john.lameboy@ctaoffice.ca](mailto:john.lameboy@ctaoffice.ca))**  
**Whapmagoostu; 819-929-3528**  
**Roy ([rmamianskum@ctaoffice.ca](mailto:rmamianskum@ctaoffice.ca))**



ᐃᓄᓄᓄ ᐃᓄᓄ ᐅᓄᓄᓄ ᐃᓄᓄᓄ ᐃᓄᓄᓄ  
EYYOU MARINE REGION WILDLIFE BOARD  
CONSEIL DE GESTION DES RESSOURCES  
FAUNTIQUES DE LA RÉGION MARINE D'EEYOU  
ᐃᓄᓄ ᐃᓄᓄᓄᓄᓄᓄᓄ ᐃᓄᓄᓄᓄᓄ

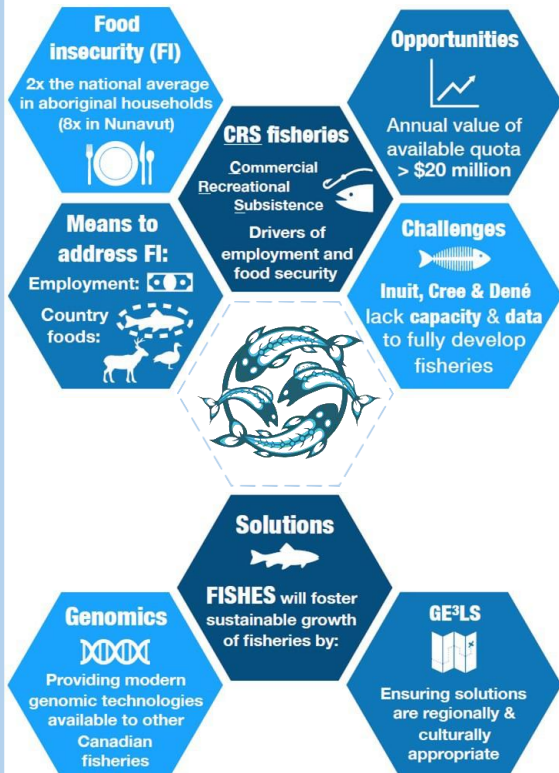


# FISHES

Fostering Indigenous Small-scale fisheries  
for Health, Economy, and Food Security

# A collaborative research project

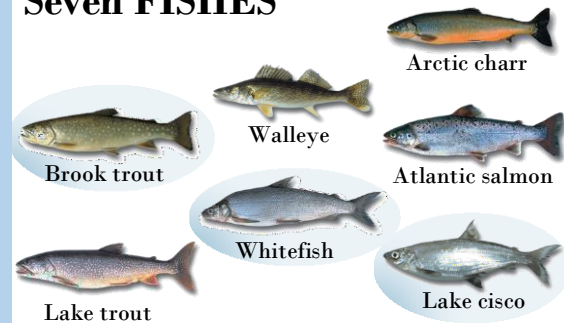
Combining Social Science, Fisheries Science and Traditional Knowledge to address challenges and opportunities related to food security and management of Commercial, Recreational and Subsistence fisheries.



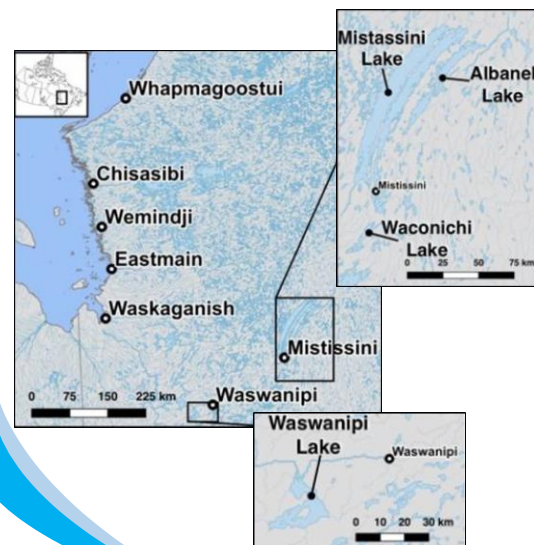
## Across Northern Canada



## Seven FISHES



## Three main regions in Eeyou Istchee



## Social science along the James Bay Coast

Establishing a framework for the co-evolution of science and traditional knowledge and conducting a gap analysis of existing fisheries related research/data.

Documenting the contribution and significance of fish to Cree culture, identity, and food security.

Sharing knowledge about definitions and understandings of fish populations and management approaches.

Understanding the relative value of multiple and alternative uses of fish species

Developing a vision and strategy for sustainable development and food security of fisheries

## Fisheries along the James Bay Coast

Defining genetically distinct stock of whitefish, cisco and brook trout in all major rivers along the James Bay Coast and determining the harvest contribution of each distinct stock in coastal fisheries.

